



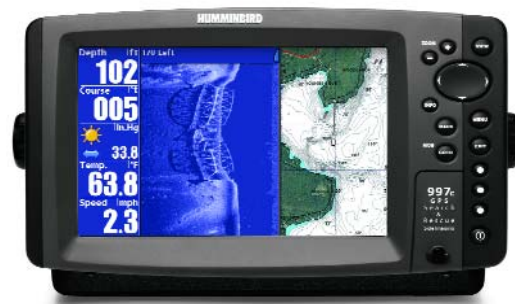
Humminbird 997c SI SAR Combo MSRP: \$1,999.99

Part # 406970-1SR

HD Side Imaging Wide Screen GPSCombo

Key Features:

- New High Definition 455/800kHz Side Imaging provides even better image clarity
- Brilliant, 8" sunlight viewable color display with 480V x 800H resolution
- Revolutionary 455/800kHz Side Imaging sonar technology and dual frequency 83/200kHz sonar
- 16 channel WAAS GPS receiver included
- Built-in UniMap™ of the USA coastline, inland lakes and rivers to 30 meters per pixel resolution
- Compatible with Navionics Platinum Charts featuring photo overlays, 3D viewing, and port approach aerial photos
- 8000 Watts Peak-to-Peak, 1000 Watts RMS maximum power output, 3000' 2D depth* and 150 foot SI depth
- Dual microprocessor and triple channel sonar transmitter/receiver delivers fast, smooth operation
- Sonar/chart recording to SD card and on-screen playback
- Full screen chartplotter, 3D bird's eye view chartplotter and split screen sonar/chart with adjustable split
- Programmable view presets access important screens with one touch
- Plug & Play compatibility with InterLink Network Connection, CannonLink Downrigger Control, WeatherSense® Barometric Pressure, and Wireless Sonar Link Fishing System Modules
- In-dash or Gimbal mount



Specifications:

Display:	480V x 800H, 8" Diagonal, 65,000 Color TFT
Transducer Standard:	Side Imaging/DualBeam PLUS
Transducer Coverage(s):	83kHz: 60° @ -10db, 200kHz: 20° @ -10db, 455kHz: (2) 86° @ -10db or 800kHz: (2) 72° @ -10db; 180° Total Coverage
Operating Frequency(s):	200, 83, & 455 or 800 kHz
Power Output:	500 Watts RMS (4000 Watts PtP) w/ Standard Transducer; 1000 Watts RMS (8000 Watts PtP) w/ Opt 50/200kHz 1kW Transducer
Depth Capability:	Side Imaging: 150' Down; 240' each side; DualBeamPlus: 1500' w/ Standard Transducer; *3000' w/ Optional 50/200kHz Transducer
Target Separation:	2 1/2 inches
Temperature:	Included in Transducer
Speed:	GPS Speed Included
Power Input:	10-20 VDC
Unit Mounting:	Gimbal or In-Dash
Unit Size Installed (Gimbal):	11 1/4" W x 6 3/4" H x 4 1/4"D
Unit Size Installed (In-dash)	10 3/4" W x 6" H x 1 3/8" D; Required Minimum 3" behind dash clearance
Transducer Mounting:	Transom Standard; Optional trolling motor or thru hulls available
GPS Receiver	External 16 Channel WAAS/EGNOS
Waypoints, Routes, Tracks/Points	3000, 50, 50/ 20,000
Cartography	Uni-Map™ Built-in, Optional Navionics® Platinum, Gold, HotMaps, HotMaps Premium
Communication	NMEA 0183 Input/Output; Fishing System Modules
Optional System Modules	InterLink, CannonLink, Wireless Sonar Link, WeatherSense Barometric Pressure and PC Connection Kit

* Maximum power output requires use of 1kW transducer



Humminbird 997c SI SAR Combo Additional Features:

- Fresh and saltwater set up options for optimal performance in any environment
- Accelerated Real Time Sonar™ operates at up to 40 times per second to instantly capture the action under the boat
- X-press™ menus place most important setting at your fingertips
- Freeze Frame pauses the sonar scroll for detailed inspection of the screen
- Instant Image Update immediately shows the results of setting changes for the most accurate fine tuning
- Sonar Echo Enhancement™ technology
- Man Overboard Function quickly adjusts the boat track back to a specific spot with the touch of a button
- Fully gasketed waterproof design
- Selectable large digit screen for easy-to-read number display
- Backlight for night viewing
- TripLog with distance, elapsed time, and average speed
- Totally automatic operation or totally manual operation with upper and lower range control
- Temperature graph overlay and audible temperature alarm along with One-touch Zoom with 2x, 4x, 6x, and 8x zoom levels
- Adjustable chart speed and feature memory retains your settings
- Water surface temperature included in transducer, speed paddlewheel available
- Grid Search capability
- Optional 200/50kHz transducer available for deep water applications and depths to 3000'

Compatible Accessories

Accessory Type	Part #	Standard	Part #	QuadraBeam	Part #	DualBeam PLUS
Transom Mount Transducer	710201-1	XHS 9 HDSI 180 T	710199-1	XNT 9 QB 90 T		
Puck Transducer					700040-1	SI HSK (and switch)
Angled Puck Transducer						
Trolling Motor Mount Transducer	710205-1	XTM 9 HDSI 180 T	710203-1	XTM 9 QB 90 T		
In-Dash Mounting Kit	740094-1	IDMK 900				
Bronze Thru Hull Transducer			710207-1	XBTH 9 QB 90 T		
Bronze Thru Hull 3 in 1 Transducer			710206-1	XTD 9 QB 90		
Plastic Thru Hull Transducer	710210-1	XPTH 9 HDSI 180 T	710209-1	XPTH 9 QB 90 T		
Mount System	740083-1	GM 2				
Temperature Sensor	730010-1	TG W				
Speed Sensor	730021-1	SW				
Speed and Temperature Sensor	730000-1	TS W				
Transducer Extension Cable	720003-1 720003-2	EC W10 EC W30				
Power Cable	720002-1	PC 10				
Transducer Switch	720012-1	TS2 W				
Unit Switch	720014-1	US2 W				